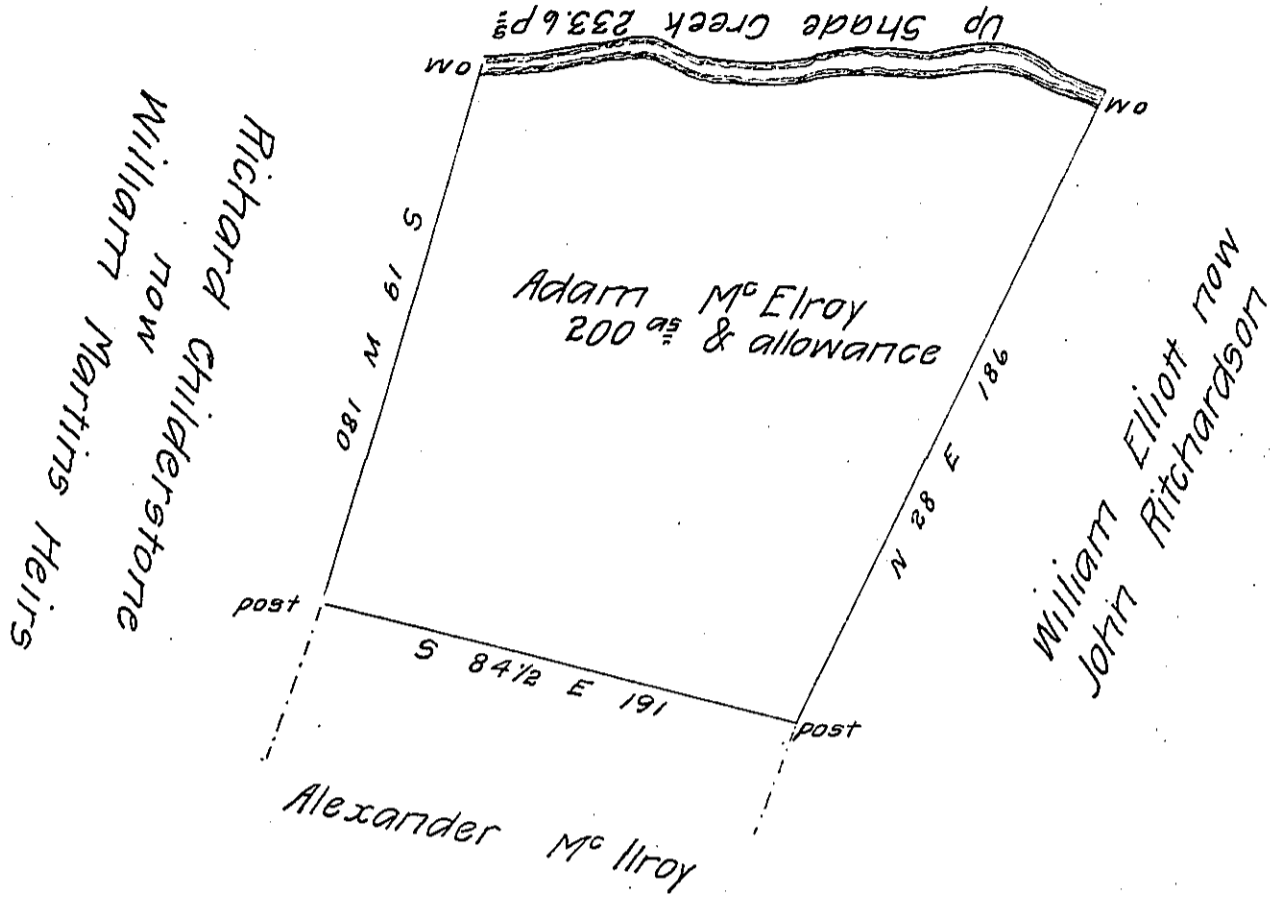


The Courses & distances up ~~500~~ 200  
Creek from a white oak to a  
White oak.

N	60	W	51
S	46	W	12.1
N	80	W	32
S	57	W	15
N	83	W	38
N	70	W	22
S	88	W	63.2
			233.6

John Moore  
now  
James Harpers Heirs



Situate in Dublin Township Huntingdon County Containing  
two hundred acres and allowance Surveyed december 4<sup>th</sup>  
1809 in pursuance of a warrant Granted to Adam Mc Elroy  
dated the 9<sup>th</sup> day of September 1794

Jno. Morrison D.S.

Andrew Porter Esq<sup>r</sup>  
Surveyor General

IN TESTIMONY that the above is a copy of the original remaining on file in  
the Department of Internal Affairs of Pennsylvania, made  
conformably to an Act of Assembly approved the 16th day of  
February, 1833, I have hereunto set my Hand and caused  
the Seal of said Department to be affixed at Harrisburg,  
this thirteenth day of July 1906

*George D. Brown*  
Secretary of Internal Affairs